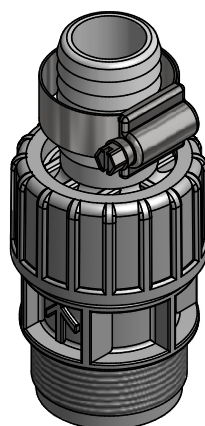


G1/2"
R3/4"



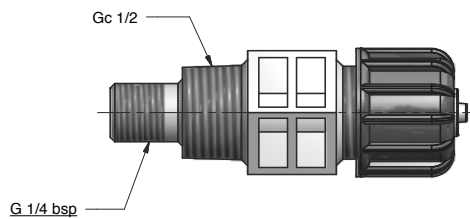
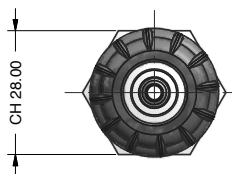
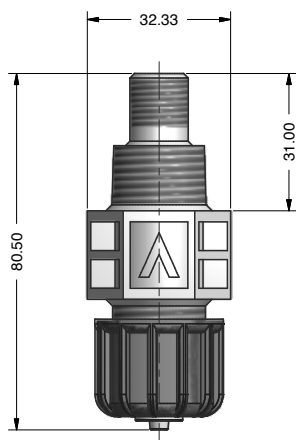
G1-1/2"

FEATURES

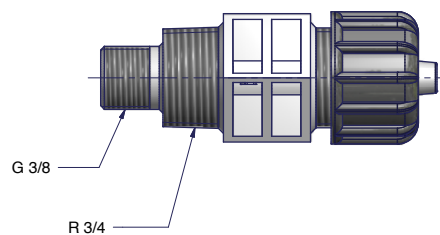
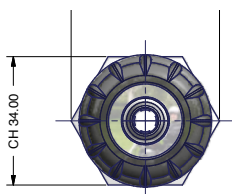
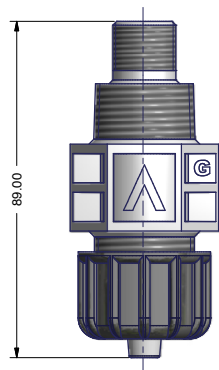
Injection valve	standard	on demand	Prius injection valve
Open pressure	0,3 bar	1 or 2 or 3 or 4 or 5 bar	1 bar
Connection	G1/2"	R3/4"	G1-1/2"
Hoses	4x6 - 6x8	8x10 - 13x16	18X22 - 30X38
Ball	Ceramic	Teflon or SS	Glass or SS
O-ring	EP or FP	PTFE or WAX	EP or FP
Material	PVDF	PVDF	PVC
Operating max T°@ pressure	25°C @ 25 bar (140°C @ 2 bar)	25°C @ 25 bar (140°C @ 2 bar)	40°C @ 16 bar

DIMENSIONS

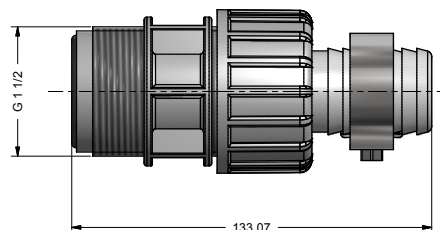
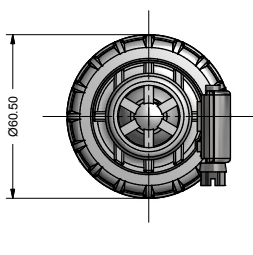
1/2" injection valve



3/4" injection valve



1-1/2" injection valve





Working pressure is impressed here:

- 0,3 bar
- 1: 1 bar
- 2: 2 bar
- 3: 3 bar
- 4: 4 bar
- 5: 5 bar



Threading nut color indicates the internal oring material:

COLOR	ORING
black	FP (FKM B)
white	EP (Etilene Propilene)
blue	PTFE
green	WAX